



FLUID VALVE MANUFACTURING COMPANY
ISO 9001:2015



DUAL DISC
SPRING LOADED
CHECK VALVE

26 Ratnam industrial estate, opp. IDFC first bank, kathvada
gam road kathvada Ahmadabad -382350





FLUID VALVE MANUFACTURING COMPANY

ISO 9001:2015



DUAL DISC SPRING LOADED WAFER CHECK VALVE

▪ FEATURES

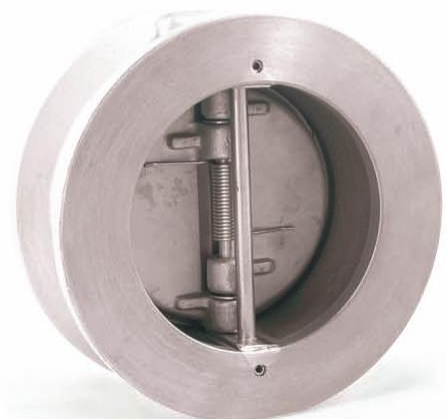
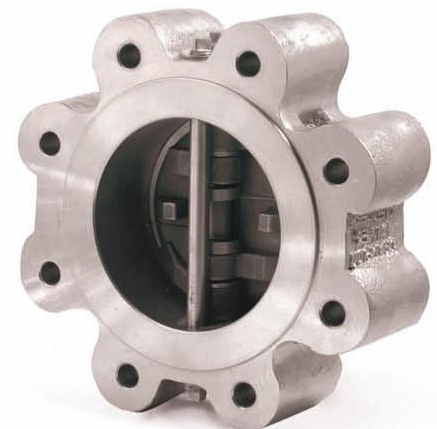
- Light weight, versatile design 80% to 90% less than conventional full-body swing check valves
- Dual Discs open to 85 degrees
- Spring-loaded discs calculated to increase the responsiveness of the discs
- Extended long-leg spring

▪ BENEFITS

- Simplifies piping
- Reduces thermal and seismic considerations
- Optimizes space utilization
- Lowers installation costs
- Reduces pipe supports
- Requires less number of man-hours
- Low cracking pressure and overall pressure drop
- Ensures positive closure
- Alleviates water hammer and resultant damaging effects
- Prevents seat wear caused by scrubbing

▪ GENERAL APPLICATION

- General service piping systems
- Water, oil, gasoline, chemicals



26 Ratnam industrial estate, opp. IDFC first bank, kathvada
gam road kathvada Ahmadabad -382350





FLUID VALVE MANUFACTURING COMPANY

ISO 9001:2015



- Gas (compressible gases)
- Air (compressed air and blower)

▪ INSTALLATION

Champion wafer check valves are designed for installation in flanged piping systems, between two flanges. Valves may be installed in vertical or horizontal piping. Care must be taken to always install the valves with the shafts in a vertical position when installing in a horizontal pipeline. Vertical up flow is always a good installation. Consult factory for vertical down flow.

Champion wafer check valves are designed to provide long service life if the velocity is kept within the flow rate shown in the table on page 7 and if a minimum of 5 pipe diameters of straight pipe in front of the valve is maintained downstream from a likely cause of turbulence (i.e., pump discharge, reducers or elbows).

▪ INDUSTRY STANDARDS

- ASME B16.1, B16.5, B16.34, B16.47 and
- API 594 and 598 • MSS-SP-25, MSS-SP-55
- API 6A and 6D (as applicable) • MSS-SP-61 (standard for the resilient seated, metal seated when required)

BODY & DISC

MATERIAL	SPECIFICATION
Aluminum Bronze	ASTM B148, Alloy 952; BS 1400, Alloy AB2
Bronze	ASTM B62, C83600
Carbon Steel	ASTM A216, Gr. WCB
Duplex	ASTM A351, Gr. CD4MCu
Alloy 20®	ASTM A351, Gr. CN7M
Cast Iron	ASTM A126; Gr.B
Hastelloy C276®	ASTM A494, Gr. CW12MW
410 Stainless Steel	ASTM A217, Gr. CA15 (12% Cr)
317 Stainless Steel	ASTM A351, Gr. CG8M
Ductile Iron	ASTM A536; Gr. 65-45-12
Monel®	ASTM A494, Gr. M-35-1
Nickel	ASTM A494, Gr. CZ-100
316 Stainless Steel	ASTM A351, Gr. CF8M
304 Stainless Steel	ASTM A351, Gr. CF8



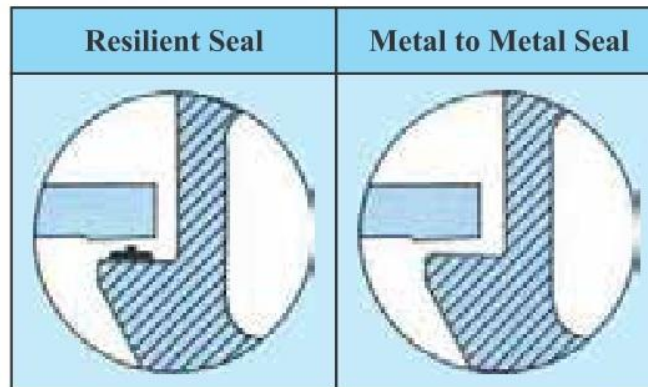


FLUID VALVE MANUFACTURING COMPANY

ISO 9001:2015



SEAL DESIGN



The valve are available with resilient seal as well as metal-to-metal seating as depicted above.

SEAT		
MATERIAL	OPERATING °C	TEMPERATURE °F
Buna-N	- 57 to 120	- 70 to 250
EPDM	-18 to 135	0 to 300
Silicone	-18 to 260	0 to 500
410 SS	- 267 to 537	- 450 to 1000+
Stellite	-267 to 53	- 450 to 1000+
Neoprene	- 40 to 120	- 40 to 250
Integral Metal	- 267 to 537	- 450 to 1000+
316 SS	- 267 to 537	- 450 to 1000+
Teflon	- 40 to 149	- 40 to 300
Viton	- 40 to 204	- 40 to 400

SPRING		
MATERIAL	OPERATING °C	TEMPERATURE °F
316 SS	260	500
Monel	232	450
Inconel	371	700
Inconel X-750	593	1100

▪ CONFIGURATION

- Wafer style, inserted between mating flanges with studs spanning entire length
- Lug design with threaded holes bolted from each end
- Lug design with through-bolt holes to protect studs
- Double flanged design with valve flanges bolted to individual like flanges



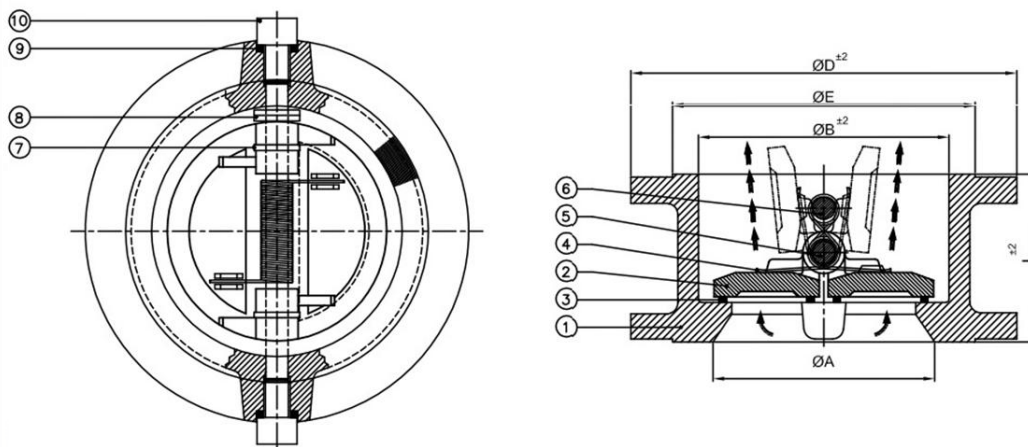


FLUID VALVE MANUFACTURING COMPANY

ISO 9001:2015



■ DRAWING



SIZE	RATING	L	ØA	ØB	ØD	Tag.No.	QTY.
50MM	150#	60	51	65	101	--	--
65MM	150#	67	65	76	120	--	--
80MM	150#	73	80	92	132	--	--
100MM	150#	73	100	113	173	--	--
125MM	150#	86	127	135	193	--	--
150MM	150#	98	152	163	218	--	--
200MM	150#	127	203	204	275	--	--
250MM	150#	146	254	262	337	--	--
300MM	150#	181	305	315	407	--	--
350MM	150#	184	350	363	449	--	--
400MM	150#	119	400	407	552	--	--
450MM	150#	203	450	465	547	--	--
500MM	150#	219	500	510	604	--	--
600MM	150#	222	600	610	715	--	--

26 Ratnam industrial estate, opp. IDFC first bank, kathvada
gam road kathvada Ahmadabad -382350





FLUID VALVE MANUFACTURING COMPANY

ISO 9001:2015



PRICE LIST

DPCV WATER TYPE 150#, SPRING SS316

SIZE	WCB+CA15	WCB+CF8	WCB+CF8M	CF8+SS304	CF8M+SS316
2"	3190	3250	3375	4065	4315
2.5"	4315	4500	4690	5375	6070
3"	4750	4940	5665	6558	7775
4"	6150	6400	6725	8350	10290
5"	8850	9000	9165	10640	13220
6"	10375	10815	11250	16750	18068
8"	15065	15570	16188	25065	29650
10"	19625	20065	20500	37065	44815
12"	13875	28815	31500	59690	64250
14"	40000	46570	55250		
16"	58375	63375	66000		
18"	65875	77440	80688		
20"	76875	101065	104840		
24"	102250	119750	125625		



26 Ratnam industrial estate, opp. IDFC first bank, kathvada
gam road kathvada Ahmadabad -382350





FLUID VALVE MANUFACTURING COMPANY

ISO 9001:2015



**26 Ratnam industrial estate, opp. IDFC first
bank, kathvada gam road kathvada**

ahmeadabad -382450

Er.A.D. Patel M.9023070513

Er Gopal Daxini M. 9023057408

Email id : info.fluidvalves@gmail.com

sales.fluidvalves@gmail.com

GST NO : 24ERYPP8468LIZG

All required materials

Any required in solution for Industrial valve



26 Ratnam industrial estate, opp. IDFC first bank, kathvada
gam road kathvada Ahmadabad -382350

